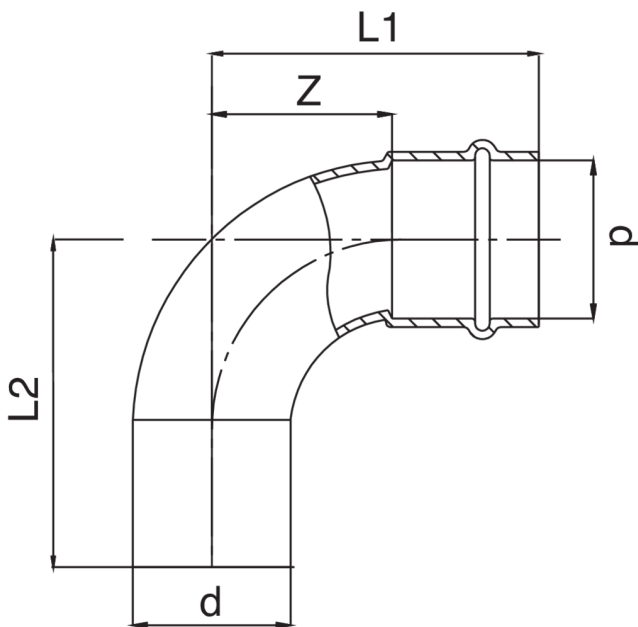




M/F 90° elbow.

Technical specifications



| D | BAG | MASTER BOX | CODE | L1 | L2 | Z |
|----|-----|------------|-----------------|-----|-----|----|
| 15 | 10 | 100 | GX0001015015000 | 40 | 42 | 18 |
| 18 | 10 | 100 | GX0001018018000 | 45 | 47 | 22 |
| 22 | 5 | 70 | GX0001022022000 | 51 | 53 | 27 |
| 28 | 5 | 40 | GX0001028028000 | 59 | 61 | 34 |
| 35 | 5 | 10 | GX0001035035000 | 68 | 70 | 42 |
| 42 | 1 | 10 | GX0001042042000 | 87 | 89 | 51 |
| 54 | 1 | 4 | GX0001054054000 | 105 | 107 | 65 |

Applications



GAS



COMPRESSED
AIR



INDUSTRIAL