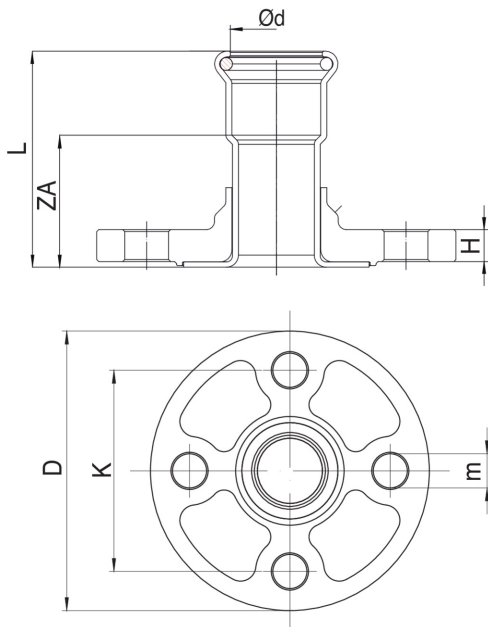




Joint avec bride PN6.

## Spécifications techniques



D	BAG	MASTER BOX	CODE	L	H	ZA	D	K	M	N° HOLES
15	5	40	MX0274015000000	54,5	10	35,5	80	55	11	4
18	5	40	MX0274018000000	56,5	10	46,5	80	55	11	4
22	5	40	MX0274022000000	61,5	12	40,5	90	65	11	4
28	2	20	MX0274028000000	63	12	41	100	75	11	4
35	2	40	MX0274035000000	70	12	43	120	90	14	4
42	2	30	MX0274042000000	73	12	43	130	100	14	4
54	2	20	MX0274054000000	79	12	44	140	110	14	4

## Applications



DRINKING  
WATER



HEATING



HVAC



COMPRESSED  
AIR



FIREFIGHTING



MARINE



STEAM



SOLAR



INDUSTRIAL