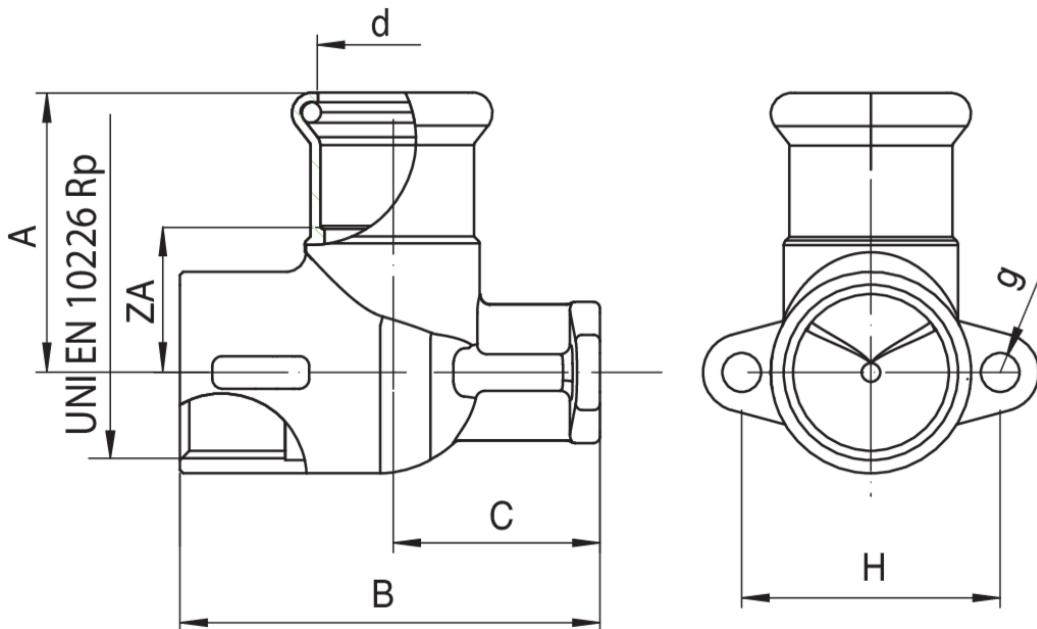




Applique coude.

## Spécifications techniques



D X RP	BAG	MASTER BOX	CODE	A	B	C	ZA	H	G
15 x 1/2"	10	80	MXF474A12015000	38	65	34	18	40	6
18 x 1/2"	10	80	MXF474A12018000	38	65	34	18	40	6
22 x 3/4"	5	50	MXF474A34022000	34	65	32	22	40	6

# Applications



DRINKING WATER



HEATING



HVAC



COMPRESSED AIR



FIREFIGHTING



MARINE



STEAM



SOLAR



INDUSTRIAL