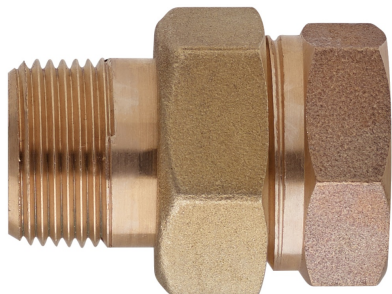
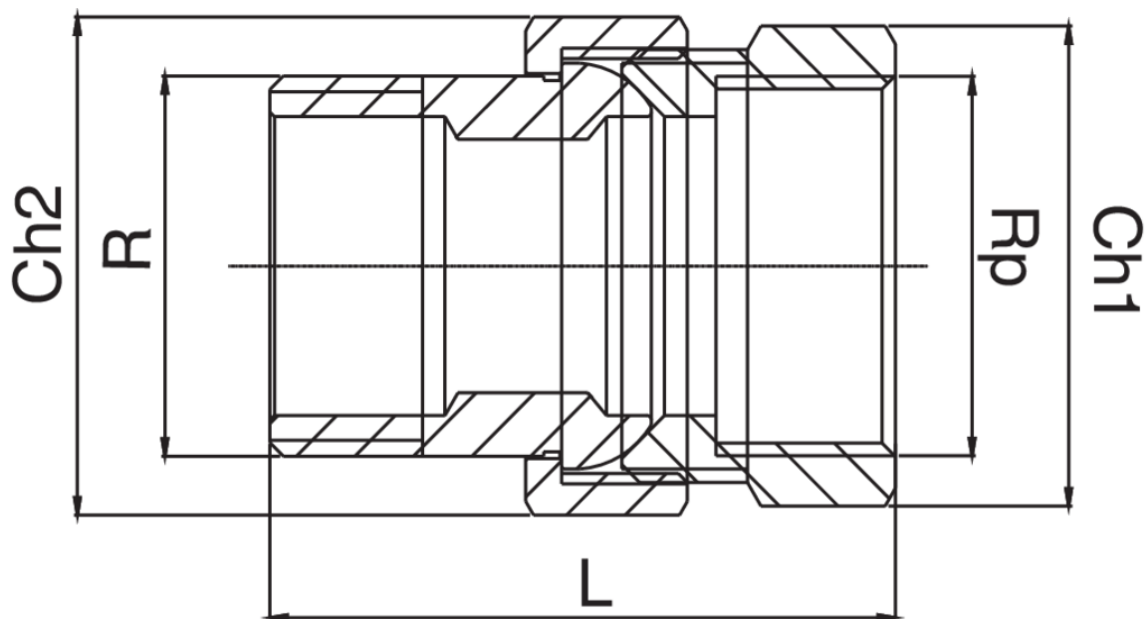


RB3341



Bocchettone a sede conica filettato maschio-femmina.

Specifiche tecniche



| RP/R | BAG | MASTER BOX | CODICE | CH1 | CH2 | L |
|-------|-----|------------|-----------------|-----|-----|------|
| 3/8" | 10 | 100 | RB3341A38A38000 | 24 | 27 | 43 |
| 1/2" | 10 | 100 | RB3341A12A12000 | 27 | 30 | 46 |
| 3/4" | 5 | 50 | RB3341A34A34000 | 34 | 37 | 53,5 |
| 1" | 5 | 30 | RB3341B01B01000 | 42 | 46 | 61 |
| 1"1/4 | 5 | 25 | RB3341B14B14000 | 50 | 52 | 70 |
| 1"1/2 | 1 | 15 | RB3341B12B12000 | 56 | 64 | 88 |
| 2" | 1 | 10 | RB3341C02C02000 | 70 | 82 | 97 |

Applicazioni



DRINKING WATER



HEATING



HVAC



GAS



COMPRESSED AIR



SOLAR



FIREFIGHTING